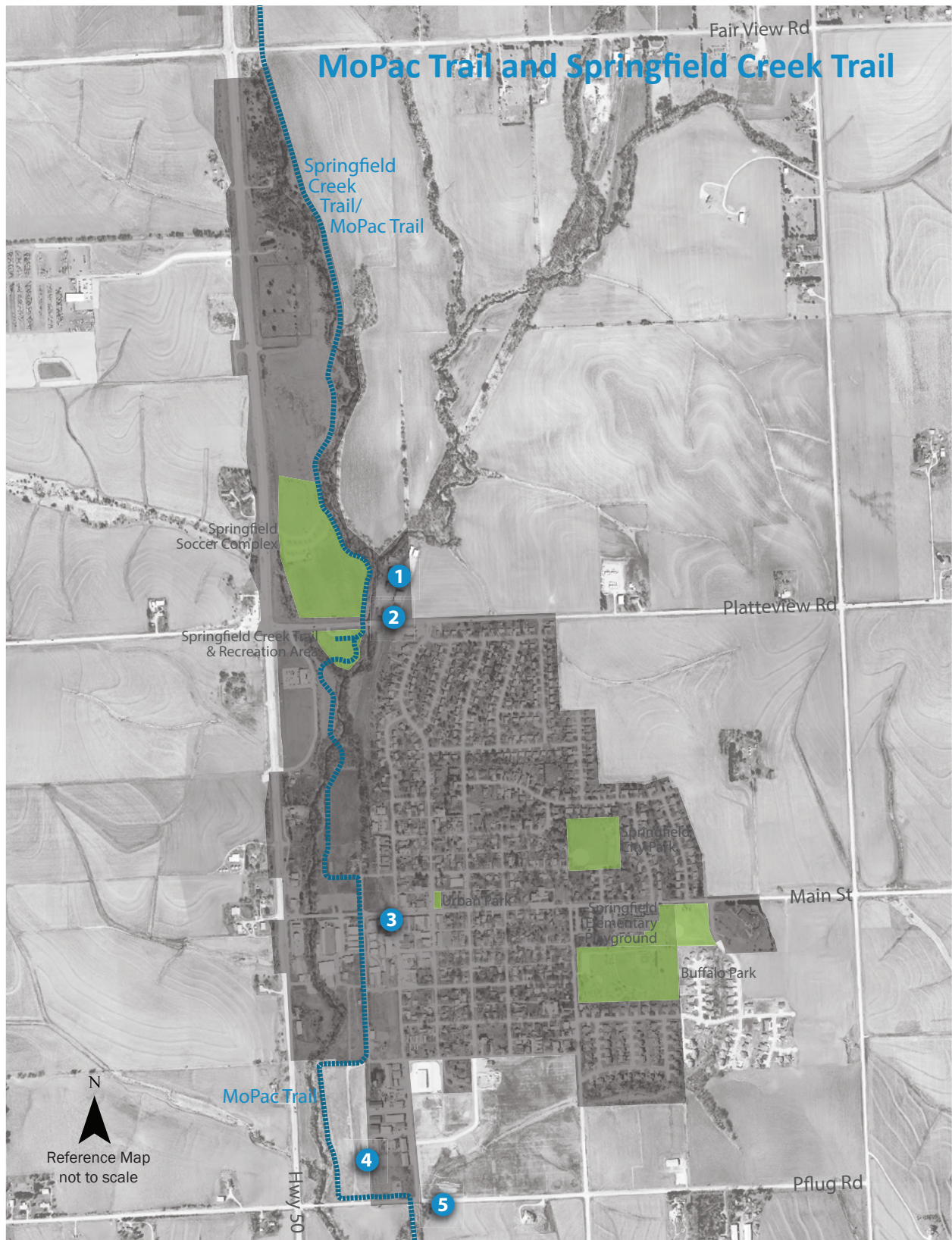


2.6 COMMUNITY FACILITIES AND UTILITIES

Figure 22 MoPac Trail and Springfield Creek Trail



Trails

TRAIL INVENTORY

The portion of the MoPac Trail which runs through Springfield formerly terminated on the corner of Railroad Street and Main Street. Until the connection to the Springfield Creek Trail near Platteview Road is completed in the Spring of 2015, this portion of the MoPac will run from the north side of the Platte River at Louisville all the way north through Springfield, to the intersection of Schram Road and Highway 50.

More specifically, the MoPac runs north-south through the western part of Springfield. Most other portions of the MoPac are unpaved but within Springfield’s corporate limits, the trail is paved. To the north, within Springfield, the trail travels along Springfield Creek, Springfield Cemetery, and Springfield Soccer Complex. It crosses below Platteview Road to Springfield Creek Recreation Area where it joins with the newest section of the Trail completed in the Spring of 2015. This newest section of trail runs adjacently and crosses the creek twice to join up with the formerly built MoPac starting at the corner of Main Street and Railroad Street. It then runs south along the Sarpy County Fairgrounds until it reaches Pflug Road. The MoPac then returns to an unpaved trail and uses the vacant Missouri Pacific railway right-of-way to connect all the way to the Platte River just north of Louisville, NE.

Currently some stretches of the MoPac are quite enjoyable for trail users because of shade created by vegetative cover or appealing views. However, other portions are not as aesthetically pleasing or conducive for users. The recent MoPac Trail expansion and connection to the Lied Bridge has the potential to bring new recreational opportunities to the City of Springfield. The Recommendation section of the Parks and Recreation component will provide direction on how the MoPac can be improved and exploited to its full potential.

1



2



3



4



5

